

basic education

Department:
Basic Education
REPUBLIC OF SOUTH AFRICA

**NATIONAL
SENIOR CERTIFICATE**

GRADE 12

LIFE SCIENCES P2

NOVEMBER 2017

MARKS: 150

TIME: 2½ hours

This question paper consists of 15 pages.



INSTRUCTIONS AND INFORMATION

Read the following instructions carefully before answering the questions.

1. Answer ALL the questions.
2. Write ALL the answers in the ANSWER BOOK.
3. Start the answers to EACH question at the top of a NEW page.
4. Number the answers correctly according to the numbering system used in this question paper.
5. Present your answers according to the instructions of each question.
6. Do ALL drawings in pencil and label them in blue or black ink.
7. Draw diagrams, tables or flow charts only when asked to do so.
8. The diagrams in this question paper are NOT necessarily drawn to scale.
9. Do NOT use graph paper.
10. You must use a non-programmable calculator, protractor and a compass, where necessary.
11. Write neatly and legibly.



SECTION A

QUESTION 1

1.1 Various options are provided as possible answers to the following questions. Choose the answer and write only the letter (A to D) next to the question number (1.1.1 to 1.1.10) in the ANSWER BOOK, for example 1.1.11 D.

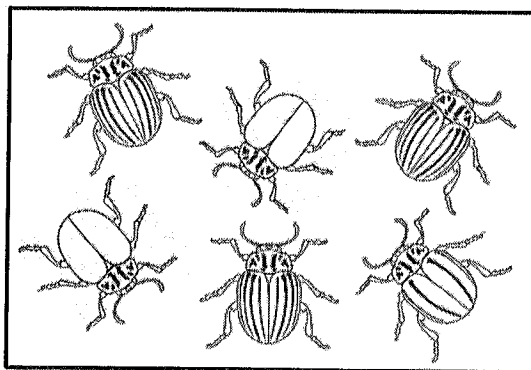
1.1.1 In a DNA molecule ...

- A guanine pairs with adenine.
- B adenine pairs with thymine.
- C cytosine pairs with adenine.
- D guanine pairs with thymine.

1.1.2 The genotype for an individual with blood group A is ...

- A $I^A I^A$ only.
- B $I^A I^A$ or $i i$.
- C $I^A i$ only.
- D $I^A I^A$ or $I^A i$.

1.1.3 Charles Darwin based the theory of evolution through natural selection on many observations.



Which ONE of his observations is represented in the diagram above?

- A Limited environmental resources
- B Populations remain stable over time
- C Individuals within a population may vary widely
- D Only the fittest will survive



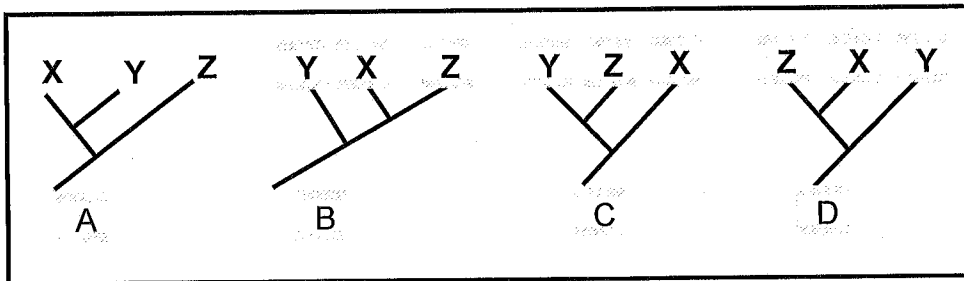
- 1.1.4 Antibiotic resistance in bacteria is an example of evolution in present times.

Which ONE of the following is a CORRECT explanation for this evolution?

- A The bacteria acquire resistance to the antibiotic by being exposed to it.
- B There is variation in the bacteria and the resistant bacteria survive.
- C The greater the number of bacteria, the higher the resistance.
- D The greater the number of bacteria, the lower the resistance.

- 1.1.5 Three related species, X, Y and Z, share a common ancestor. Species Y and Z share the MOST RECENT common ancestor.

Which phylogenetic tree most accurately represents their evolutionary relationship?



- 1.1.6 Study the statements about alleles below:

- (i) Alternate forms of a gene are called alleles.
- (ii) There is always only two alleles for a given characteristic.
- (iii) The alleles for a particular characteristic are given in a genotype.
- (iv) Alleles are found at corresponding positions on homologous chromosomes.

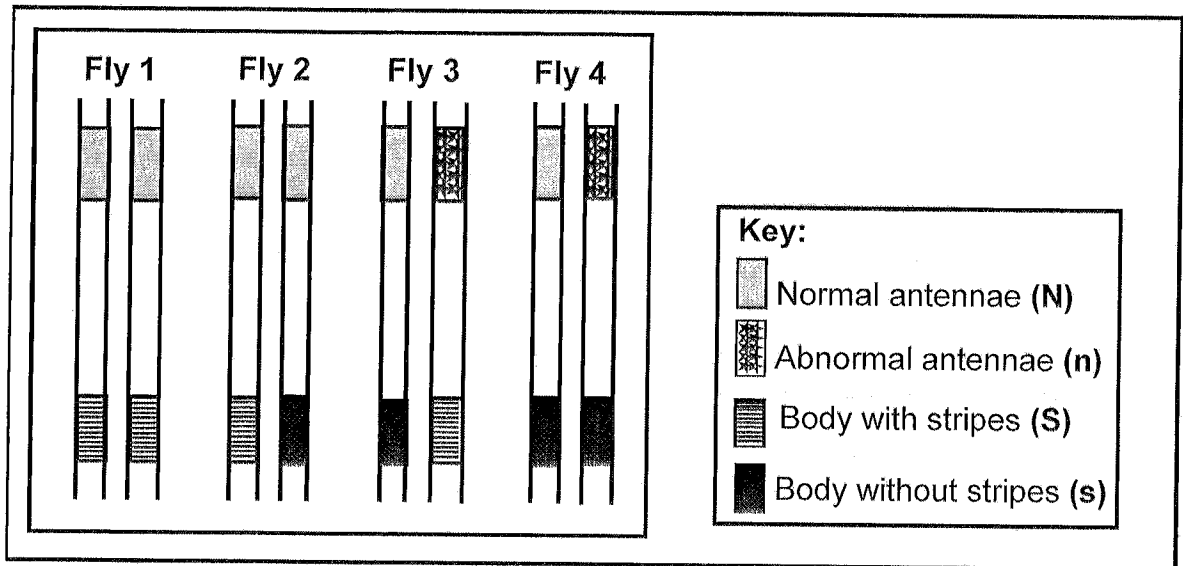
Which combination of statements is CORRECT?

- A (i), (ii), (iii) and (iv)
- B (i), (iii) and (iv) only
- C (i), (ii) and (iv) only
- D (ii) and (iv) only

- 1.1.7 Which ONE of the following is a reproductive isolating mechanism?
- A Breeding at different times of the year
 - B Same pollinators for different species of plants
 - C Absence of a geographic barrier
 - D Cloning

QUESTIONS 1.1.8 TO 1.1.10 ARE BASED ON THE DIAGRAM BELOW.

The diagram shows one pair of homologous chromosomes found in each of four fruit flies. The alleles for antenna shape (normal or abnormal) and body pattern (with stripes or without stripes) are indicated on the chromosomes.



- 1.1.8 Which fly is homozygous for antennae shape and heterozygous for body pattern?
- A Fly 4
 - B Fly 3
 - C Fly 2
 - D Fly 1
- 1.1.9 What is the genotype of Fly 3?
- A NnSS
 - B NNSs
 - C NnSs
 - D NNss
- 1.1.10 Which ONE of the following will represent the possible gametes for Fly 4?
- A Ns, NS
 - B NS
 - C nS
 - D Ns, ns

(10 x 2) (20)



- 1.2 Give the correct **biological term** for each of the following descriptions. Write only the term next to the question number (1.2.1 to 1.2.9) in the ANSWER BOOK.
- 1.2.1 Nitrogenous base found only in RNA molecules
- 1.2.2 The use of biological processes, organisms or systems to improve the quality of human life
- 1.2.3 Type of variation within a population in which there is a range of intermediate phenotypes
- 1.2.4 An upright posture and walking only on two legs
- 1.2.5 A sugar molecule found in a nucleotide of DNA
- 1.2.6 Genetic disorder resulting in the abnormal clotting of blood
- 1.2.7 Study of fossils
- 1.2.8 Present-day distribution of living organisms across the continents
- 1.2.9 Family to which humans belong (9 x 1) (9)

- 1.3 Indicate whether each of the statements in COLUMN I applies to **A ONLY**, **B ONLY**, **BOTH A AND B** or **NONE** of the items in COLUMN II. Write **A only**, **B only**, **both A and B**, or **none** next to the question number (1.3.1 to 1.3.3) in the ANSWER BOOK.

COLUMN I	COLUMN II
1.3.1 Feature of chimpanzee skulls	A: Prognathism B: Forward position of foramen magnum
1.3.2 Similarity between humans and African apes	A: Opposable thumb B: A short and wide pelvis
1.3.3 Discovered the fossil called 'Little Foot'	A: Raymond Dart B: Ron Clarke

(3 x 2) (6)



- 1.4 Mendel observed some characteristics of the pea plant (*Pisum sativum*) which he suggested were controlled by inherited factors. He conducted a series of experiments in which he crossed pea plants with contrasting phenotypes to obtain the offspring of the F_1 generation. At first his crosses were simple and involved only one pair of characteristics.

Mendel counted the number of offspring showing each of the variations.

His results are shown in the table below.

PLANT PART	CHARACTERISTIC	P_1 GENERATION	F_1 GENERATION
Seed	Seed texture	Round x wrinkled	All round
	Seed colour	Yellow x green	All yellow
Pod	Pod texture	Full x constricted	All full
	Pod colour	Green x yellow	All green
Flowers	Flower colour	Violet x white	All violet
Stem	Location of flower on stem	Axial x terminal	All axial
	Height of stem	Tall x short	All tall

1.4.1 Give the term for:

- (a) The *inherited factors* that Mendel referred to (1)
- (b) A cross involving only ONE characteristic (1)

1.4.2 Name the female structure of the flower where meiosis occurs. (1)

1.4.3 Use the information in the table above to give the NUMBER of EACH of the following:

- (a) Characteristics of pods (1)
- (b) Alleles for seed characteristics (1)

1.4.4 Give the characteristic that is:

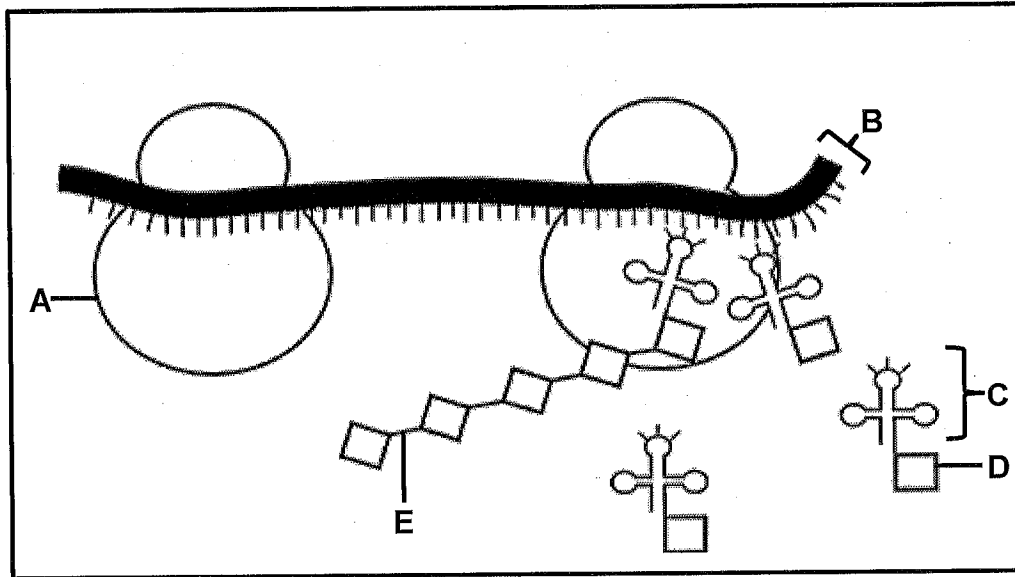
- (a) Dominant for flower colour (1)
- (b) Recessive for stem height (1)

1.4.5 If the individuals of the F_1 generation are crossed, how many phenotypes for seed colour would be expected in the F_2 generation? (1)

(8)



1.5 The diagram below represents a process that occurs during protein synthesis.



1.5.1 Identify the process above. (1)

1.5.2 Identify:

(a) Organelle A (1)

(b) Molecule B (1)

(c) The bond at E (1)

1.5.3 Give only the LETTER of the molecule that:

(a) Carries the amino acid (1)

(b) Is copied from DNA (1)

(c) Is the monomer/building block of proteins (1)

TOTAL SECTION A: 50

SECTION B**QUESTION 2**

- 2.1 The sequence of amino acids in a protein molecule is coded for by DNA and RNA. The table below shows some mRNA codons and the corresponding amino acids.

mRNA CODONS	AMINO ACID
AGC	Serine
GAU	Aspartate
CUA	Leucine
UAU	Tyrosine
UUC	Phenylalanine
AGU	Serine
GAC	Aspartate
UUU	Phenylalanine
CUC	Leucine
GAG	Glutamic acid

- 2.1.1 According to the table, how many codons code for phenylalanine? (1)
- 2.1.2 What is the anticodon for glutamic acid? (1)
- 2.1.3 A section of mRNA has the following base sequence and is read from left to right:

GAU CUC GAC AGC AUG ACC

Give the:

- (a) DNA base triplet for the LAST codon on this section of mRNA (1)
- (b) FIRST amino acid coded for by this section of mRNA (1)
- 2.1.4 A mutation occurred which resulted in the following base sequence on the mRNA molecule:

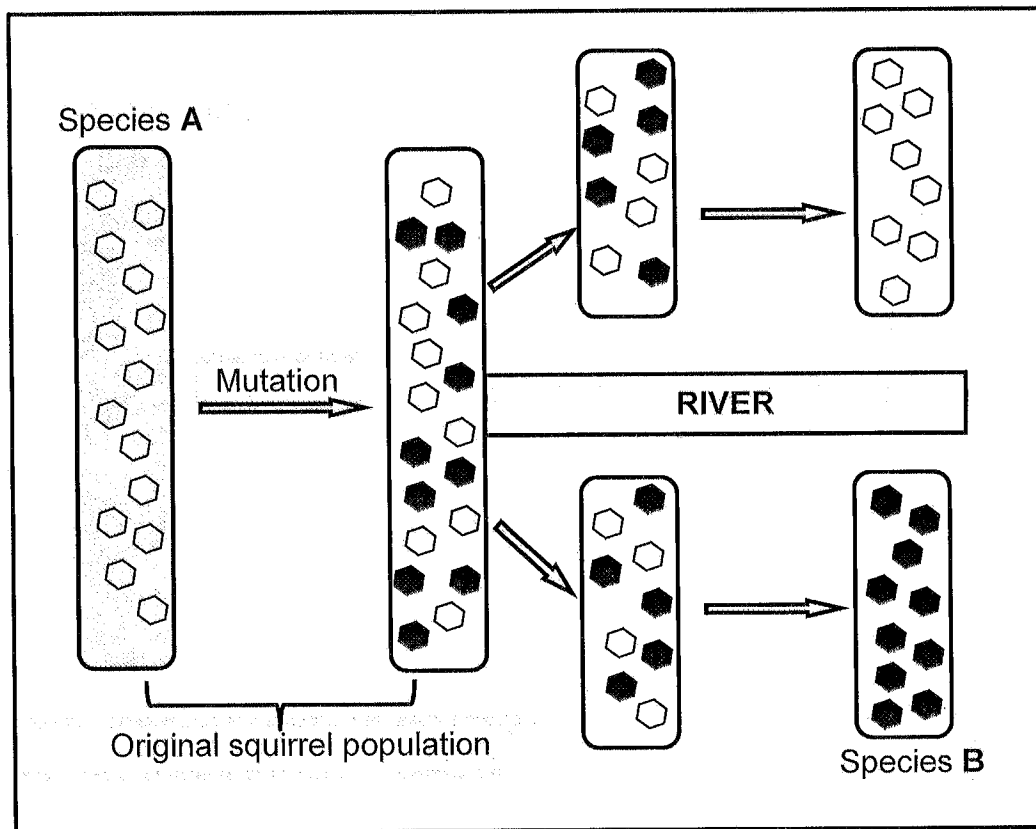
GAU CUC GAC AGU AUG ACC

- (a) Describe the mutation that occurred. (2)
- (b) Explain the effect that the mutation described in QUESTION 2.1.4(a) will have on the resulting protein. (2)
- 2.1.5 Name and describe the process occurring in the nucleus which results in the formation of an mRNA molecule. (6)

(14)



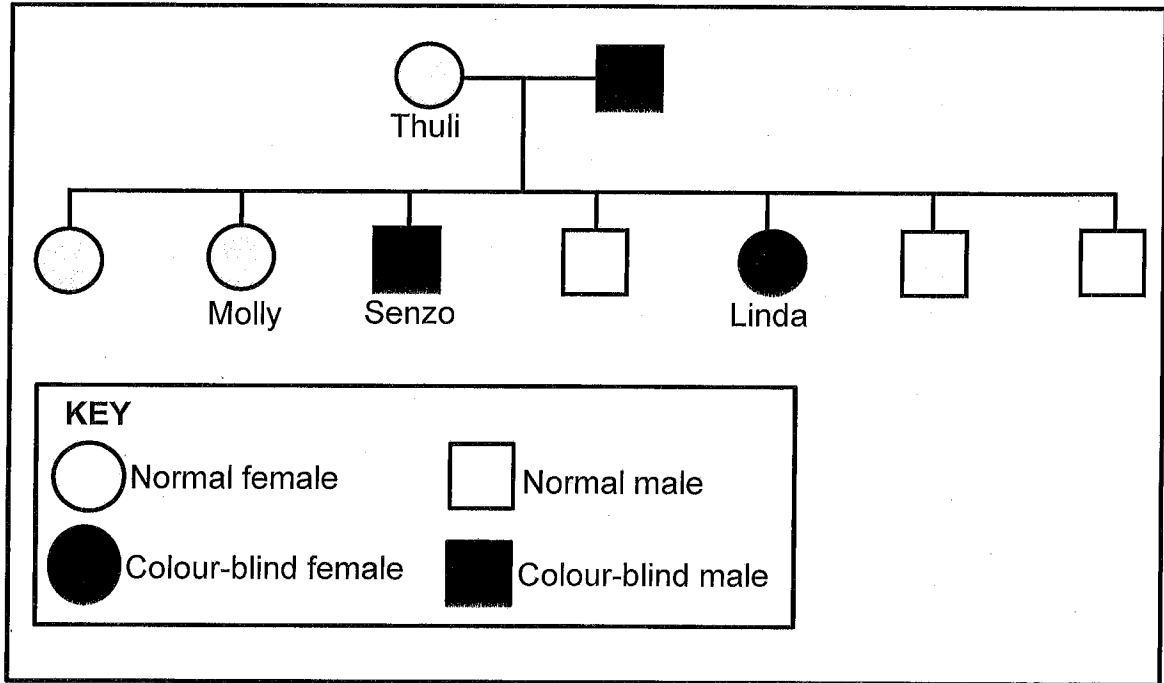
- 2.2 A mutation occurred within a population of squirrels. This population was then separated by a river. Many years later it was discovered that the original population had undergone speciation. The process of speciation is shown in the diagram below.



- 2.2.1 Define a *population*. (2)
- 2.2.2 Other than mutations, give THREE causes of variation in a population. (3)
- 2.2.3 Explain why there were eventually more squirrels with the mutation on one side of the river. (3)
- 2.2.4 Explain what effect the process above has on the biodiversity in this ecosystem. (2)
- 2.2.5 It was discovered that species A and B were TWO separate species. Describe what can be done to confirm that the squirrels belong to two different biological species. (2)
- (12)

2.3 Colour-blindness (Daltonism) is a sex-linked disorder caused by a recessive allele (X^d).

The diagram below shows the inheritance of this disorder in a family.



- 2.3.1 Give the:
- (a) Phenotype of Senzo (1)
 - (b) Genotype of Thuli (1)
- 2.3.2 Describe how Linda inherited colour-blindness. (2)
- 2.3.3 Explain why there are generally more males than females with colour-blindness in a population. (4)
- 2.3.4 Molly married a 'normal male'. Use a genetic cross to show the possible genotypes and phenotypes of their children. (6)
- (14)**
[40]



QUESTION 3

- 3.1 Scientists use fossils as evidence for human evolution. The brain volume of some extinct primates has been estimated from their fossils and have been compared to the brain volumes of living primates.

The results are shown in the table below.

PRIMATE	PERIOD OF EXISTENCE (million years ago)	AVERAGE BRAIN VOLUME (cm ³)
<i>Ardipithecus ramidus</i>	5,8 to 4,4	400
<i>Australopithecus afarensis</i>	4 to 2,7	450
<i>Australopithecus africanus</i>	3 to 2	450
<i>Homo habilis</i>	2,2 to 1,6	750
<i>Homo erectus</i>	2 to 0,4	1 000
<i>Homo neanderthalensis</i>	0,3 to 0,23	1 500
<i>Homo sapiens</i>	0,2 to present	1 400
Modern apes	0,2 to present	500

- 3.1.1 Apart from fossil evidence, give TWO other types of evidence for human evolution. (2)
- 3.1.2 Which primate became extinct first? (1)
- 3.1.3 The brain of an organism is not preserved as a fossil.
How do scientists determine the brain volume of extinct primates? (2)
- 3.1.4 Calculate the difference in brain volume (in cm³) between the two living primates. Show ALL calculations. (2)
- 3.1.5 Give evidence in the table that suggests that:
- (a) *Homo habilis* and *Homo erectus* may have existed at the same time (1)
- (b) *Ardipithecus* was the most primitive of all the primate genera (1)
- 3.1.6 Draw a bar graph to show the average brain volume of EACH of the species of the genus *Homo*. (6)
(15)



3.2 Read the extract below.

Long before the development of agricultural crops, South African villagers would pick the sweetest and largest fruits of the marula tree and scatter them around their camps. The seeds of these fruit would germinate and grow into fruit-bearing trees. The best fruit would then be chosen from these trees and the process would be repeated.

In recent times, farmers use a process called marcotting. This involves peeling away the bark in one area around a branch. This area is stimulated to form roots. The branch is then removed from the tree and planted in the soil to produce more marula trees.

- 3.2.1 Name the characteristics that the villagers were selecting. (2)
- 3.2.2 Explain how this practice is an example of artificial selection. (3)
- 3.2.3 Give ONE environmental factor that could affect the characteristics named in QUESTION 3.2.1. (1)
- 3.2.4 Explain ONE disadvantage of a plantation of marula trees grown through marcotting compared to a population of marula trees that have reproduced naturally. (2)
- 3.2.5 Explain whether the fruits from marcotted marula trees could be classified as genetically modified (GM). (2)
- 3.2.6 State TWO benefits of genetic modification. (2)
- (12)**



- 3.3 A species of mice have different fur colours in different habitats. Scientists observed that there were more mice with a lighter fur colour in a beach habitat where the sand was lighter in colour. Also, there were more mice with a darker fur colour in the mainland habitat where the sand was darker in colour. Owls attack and prey on the mice.

Scientists wanted to investigate how the colour of the fur affects the chances of the mice being attacked. They conducted a simulation where they used models to represent the mice.

While conducting the investigation they:

- Made clay models of the mice
- Painted 200 clay models to resemble the lighter fur colour and 200 models to resemble the darker fur colour
- Placed an equal number of mice of each colour randomly in the beach habitat and in the mainland habitat
- Allowed enough time for predators to attack the mice models
- Collected all the models and recorded the number that were damaged after being attacked

The results of the investigation are shown in the diagram below.

HABITAT	FUR COLOUR	NUMBER OF MODELS ATTACKED
Mainland	Lighter	80
	Darker	20
Beach	Lighter	26
	Darker	78

- 3.3.1 State TWO independent variables. (2)
- 3.3.2 How many mice with a lighter fur colour were placed in the beach habitat? (1)
- 3.3.3 State TWO ways in which the scientists ensured the reliability of the results. (2)
- 3.3.4 Give a conclusion for the investigation conducted in the mainland habitat. (2)
- 3.3.5 Explain the results obtained for the beach habitat. (4)
- 3.3.6 Explain why the simulation may not be an accurate representation of the survival of the mice. (2)
- (13)**
[40]

TOTAL SECTION B: 80



SECTION C**QUESTION 4**

Describe the structure and arrangement of chromosomes making up the normal human karyotype. Also describe the behaviour of the chromosomes during the different phases of meiosis I.

Content: (17)
Synthesis: (3)

NOTE: NO marks will be awarded for answers in the form of tables, flow charts or diagrams.

TOTAL SECTION C: 20
GRAND TOTAL: 150





EA517LF2K0053782