



GAUTENG EAST

LIFE ORIENTATION



MARKS: 100

TIME: 2 HOURS

THIS PAPER CONSISTS OF 9 PAGES

INSTRUCTIONS:

1. Read **ALL** the instructions carefully before you answer the questions.
2. Leave a line open at the end of **EACH** question.
3. Number all the responses correctly according to the numbering system used in the question paper.
4. This controlled test consists of **9** pages (cover page included).
5. The question paper consists of **THREE** sections:
 - Section A: 20 marks (compulsory)**
 - Section B: 40 marks (compulsory)**
 - Section C: 40 marks (choose only TWO questions)**
6. You must answer **SECTION C** in full sentences and paragraphs. The questions will test your ability to apply your knowledge and skills.
7. Write neatly and legibly.

SECTION A (COMPULSORY)

Answer ALL the questions in this section.

QUESTION 1

1.1 Various options are provided as possible answers to the following questions. Choose the answer and write only the letter (A-D) next to the question number (1.1.1 – 1.1.5) in the ANSWER BOOK, for example 1.1.5. B

1.1.1 What does the acronym CEDAW stand for:

- A Committee on the expression of Discrimination against Women.
- B Committee on the Elimination of Discrimination of Discrimination against Women.
- C Community Environmental Diseases Worldwide.
- D Crime Encouragement on Discrimination against Women.

1.1.2 Significant contributions by individuals to address Human Rights Violations in SA during apartheid include:

- A DJ Tira, Skomota, Samthing Soweto
- B Kelvin Momo, DJ Stokie, Siya Kolisi
- C Desmond Tutu, Sophie de Bruin, Helen Suzman, Charlotte Maxeke
- D Steve Hofmeyer, Taylor Swift, Shaun Pollock

1.1.3 Discrimination...

- A A situation where everyone has a right to protest.
- B A platform where everyone is allowed to express themselves fairly.
- C Unfair /different/bias/prejudicial treatment of a person or group based on gender, sex, race, culture etc
- D A person who lies for no real reason.

1.1.4 Sexual Orientation...

- A Generalised ideas/views and statements about a particular group of people in a society.
- B A person's sexual/gender identity in relation to the gender of the people the person is attracted to romantically.
- C When someone is treated in a negative way.
- D An extreme form of sexual abuse.

1.1.5 ...16 days of activism against women and child abuse

- A A UNITED NATIONS campaign that takes place every year from 25 November to 10 December that aims to eliminate violence against women and children.
- B Days of rest and recreation.
- C The act of taking your own life.
- D A pattern of harmful and unhealthy use of substance abuse for 16 days.
- (5X1) (5)

1.2 Give one word/term for each of the following descriptions.

- 1.2.1 A grouping of occupations that have common skills, knowledge and work setting (1)
- 1.2.2 Allocation of specific jobs to men/women due to perceived strength or weaknesses associated with a particular gender. (1)
- 1.2.3 This is the work that you do and requires special education, training or a skill (1)

1.3 Answer the following questions by writing the answer next to the question numbers.

- 1.3.1 Demonstrate an understanding of the following concepts:
- Power (1X2) (2)
 - Power Relations (1X2) (2)
- 1.3.2 Explain how can negative gossip about a person be a factor that influences self-esteem. (1X2) (2)
- 1.3.3 Why should people respect and acknowledge uniqueness of self and others (1X2) (2)

Gender Inequality

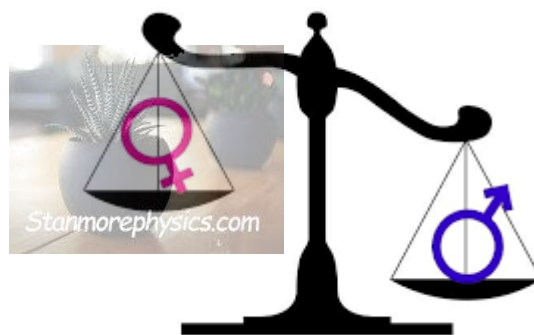


IMAGE EXTRACTED FROM GOOGLE: 04 MAY 2024

- 1.4
- 1.4.1 Why is sexual abuse a punishable offence? (1X2) (2)
- 1.4.2 State the influence of gender inequality to teenage pregnancy. (1X2) (2)

TOTAL SECTION A [20]

SECTION B (COMPULSORY)

Answer all questions in this section.

QUESTION 2

Look at the cartoon below and answer the questions that follow.



EXTRACTED FROM GOOGLE: 04 MAY 2024

- | | | |
|-----|-----------------------------------------------------------------------------------------------------------------------------------------------------------------------|---------------------------------------|
| 2.1 | Demonstrate an understanding of the concept <i>Social Justice</i> . | (1X2) (2) |
| 2.2 | Discuss the harmful effects crime has on personal health. | (2X2) (4) |
| 2.3 | Explain THREE ways in which lack of basic services like electricity, can have a negative impact on community health. | (3X2) (6) |
| 2.4 | Critically discuss how the harsh realities of poverty can affect: <ul style="list-style-type: none"> • Local Communities • Global Communities | (2X2) (4)
(2X2) (4)
[20] |

QUESTION 3

Read the extract below and answer the questions that follow

Studying is a key skill used not only in education, but also in day-to-day life. It builds knowledge and understanding of a subject area which helps prepares you for your future. Whether that involves advancing in your education or embarking on a new job or apprenticeship. Generally, developing good study skills is great for your personal growth and your future endeavors. These are only a few reasons why is it important to study.

When you're in school, studying is a big deal as it is essential when trying to achieve the targets and grades you want. This is especially true if you are considering moving on to further education. Such as going to university.

Extracted from: <https://www.aspiretrainingteam.co.uk/> 4 May 2024

- | | | |
|-----|------------------------------------------------------------------|-----------|
| 3.1 | Define <i>comprehension</i> as a study skill and give an example | (1+1) (2) |
|-----|------------------------------------------------------------------|-----------|

- 3.2 Discuss how **concentration** during a lesson in class can be advantageous when preparing for exams. (2X2) (4)
- 3.3 Give TWO examples of **study methods** and explain their impact when studying with a group of 'study buddies' after school hours. (2X2) (4)
- 3.4 Assess the importance of applying TIME MANAGEMENT as a skill during an exam. (2X2) (4)
- 3.5 How can developing a **study plan** early in term 2 assist learners to be confident when exams start? (2X3) (6)
- [20]**

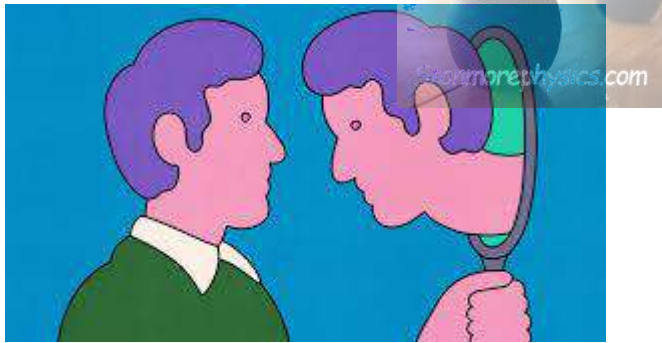
TOTAL SECTION B [40]

SECTION C (ANSWER ANY TWO QUESTIONS IN THIS SECTION)

Your responses must be in a form of a short essay. Marks will be allocated for responses written in full sentences.

QUESTION 4

Look at the cartoon below and answer questions that follow.



CARTOON EXTRACTED FROM GOOGLE: 5 MAY 2024

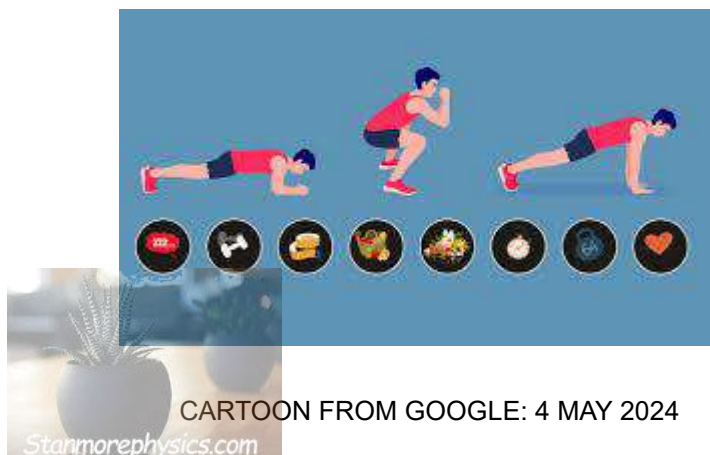
Self-Awareness and Self-Esteem

- Briefly state FOUR possible factors that may influence self-awareness and self-esteem. (4X1) (4)
- Explain TWO advantages of developing strategies to build confidence in self and others. (2X4) (8)
- Critically discuss why it is important to acknowledge and respect the uniqueness of others in relation to:
 - Individual Abilities
 - Personal Preferences(2X4) (8)

[20]

QUESTION 5

Look at the cartoon below and answer the questions that follow.



CARTOON FROM GOOGLE: 4 MAY 2024

Value of participation in fitness programmes

- State FOUR *safety issues* relating to participation in Physical Activities. (4X1) (4)
 - Explain the concepts below that promote fitness and give examples:
 - Cardiovascular Fitness
 - Muscular Strength
 - Endurance (4X2) (8)
 - Flexibility
 - Discuss the benefits of regular physical activity. (2X4) (8)
- [20]**

QUESTION 6

Look at the graphics below and answer questions that follow.



PICTURE AND CARTOON EXTRACTD FROM GOOGLE: 4 MAY 2024

Promote activities that promote skills in INDEGENOUS GAMES

- Define *Indigenous Games* and give THREE examples. (1+3) (4)



- Explain TWO **social benefits** of participating in indigenous games as a learner in a multicultural school/society. (2X4) (8)
 - Discuss skills and values learners can acquire through demonstrating and participating in indigenous games. (4X2) (8)
- [20]**

TOTAL SECTION C: [40]
GRAND TOTAL: [100]