



KWAZULU-NATAL PROVINCE

**EDUCATION
REPUBLIC OF SOUTH AFRICA**

**NATIONAL
SENIOR CERTIFICATE**

GRADE 10

MATHEMATICAL LITERACY

COMMON TEST

Stanmorephys **SEPTEMBER 2023**

Stanmorephysics.com

MARKS: 75

TIME: 1 ½ hours

This question paper consists of 7 pages and an addendum with 1 annexure.

INSTRUCTIONS AND INFORMATION

1. This question paper consists of FOUR questions. Answer ALL the questions.
2. Use ANNEXURE A in the addendum for QUESTION 3.
3. Number the answers correctly according to the numbering system used in this question paper.
4. Start EACH question on a NEW page.
5. You may use an approved calculator (non-programmable and non-graphical), unless stated otherwise.
6. Show ALL calculations clearly.
7. Round off ALL final answers to two decimal places.
8. Indicate units of measurement, where applicable.
9. Maps and diagrams are NOT necessarily drawn to scale, unless stated otherwise.
10. Write neatly and legibly.

QUESTION 1

Downloaded from Stanmorephysics.com

- 1.1 In TABLE 1 below is a list of explanations and definitions of concepts used in Mathematical Literacy.

TABLE 1: List of definitions and explanations used in Mathematical Literacy

A	An estimate of income and expenditure for a set period of time.
B	The total distance around the object.
C	The method of collecting data through a face-to-face engagement.
D	Interest calculated on the initial amount.

Use the information above to write the letter of the explanation or definition (A to D) of each of the following concepts:

Downloaded from Stanmorephysics.com

1.1.1 Perimeter (2)

1.1.2 Budget (2)

1.1.3 Simple interest (2)

- 1.2 Peter works for a private school in Gauteng as a Mathematical Literacy educator. He is the examiner for other private schools around his area. He states that he is paid R2650 for a one hour paper. The most recent paper he set was a $2\frac{1}{2}$ hours paper.

Use the information above to answer the questions that follow.

1.2.1 Convert $2\frac{1}{2}$ hours to minutes. (2)

1.2.2 Determine the amount the examiner will receive for setting a $2\frac{1}{2}$ hours paper. (2)

1.2.3 Write the amount of setting a $2\frac{1}{2}$ hour paper in words. (2)

1.3

Miss Nzunza of Moses Zikhali Secondary school bought a cooler box at Makro. The advertisement shown below is with VAT inclusive prices.



Prices valid 11 – 24 April 2022

Downloaded from Stanmorephysics.com

[Source:makro.co.za]

Use the information above to answer the questions that follow.

1.3.1 Write down the acronym "VAT" in full. (2)

1.3.2 Determine the capacity of the cooler box. (2)

1.3.3 Determine the total number of days this advertisement is valid for. (2)

1.3.4 Calculate the amount to be saved on this cooler box.

You may use the following formula:

$$\text{Savings} = \text{Old Price} - \text{New Price} \quad (2)$$

[20]

QUESTION 2

Samkelo visited Dicey Stores to buy groceries. The till slip below shows the items he bought.

[illegible]

[Source:siyavula.com]

Use the information above to answer the questions that follow.

- 2.1 Determine the cost of milk tart. (2)
- 2.2 Write down the probability of having the VAT free items to all items bought by Samkelo. (2)
- 2.3 Determine the price per kilogram of popcorn. (2)
- 2.4 Give one reason why do shops round off the amount due. (2)
- 2.5 Show how the amount R22, 90 of ENT bacon/egg LF was calculated. (2)
- 2.6 Samkelo paid R193, 24 using EFT. Determine the bank charges fee for this transaction. You may use the formula:
Bank transaction fee = R3,00 + R1,20 per R100 (or part thereof) (3)
- 2.7 Name ONE banking method Samkelo could use to carry out the EFT transaction. (2)
- 2.8 Give one reason why Samkelo prefers to use EFT for payment other than paying cash. (2)

[17]

QUESTION 3

Thulani wants to build a house for his mother. ANNEXURE A shows the floor plan of the house he wants to build in Emvunyane.

Use ANNEXURE A to answer the questions that follow.

- 3.1 Which room is on the left hand side when you enter the house? (2)
- 3.2 In which general direction is the bath from the living room? (2)
- 3.3 One of the door locks needs to be changed. Write the probability that the door lock is NOT the door lock found in the main door of the house. Write the probability as a fraction. (2)
- 3.4 Thulani claims that the kitchen gets a lot of sunlight in the morning. Critically comment on his remarks. (3)
- 3.5 Thulani looks at the features of the external walls of his house and is not happy. Mention ONE feature that he is not happy with and give a reason for it. (3)
- 3.6 The scale used on the plan is 1cm representing 1 000 mm in reality.
- 3.6.1 Convert 1cm to mm. (2)
- 3.6.2 Write the given scale in number format. (2)
- 3.6.3 Measure the eastern wall of the house and use the given scale to calculate its actual length (in m). (5)
- [21]**

QUESTION 4

Mr Khumalo recently bought a second hand diesel tank with a volume of 6300 litres. Due to loadshedding, he uses a generator to provide dependable power to his farm.

PICTURE OF A DIESEL TANK

[Source:www.s3.amazonaws.com]

Use the information above to answer the questions that follow.

- 4.1 Write the volume of the tank in words. (2)
- 4.2 How many dozens of litres is the volume of the tank? (2)
- 4.3 Mr Khumalo fills his tank to 80% of its capacity. Calculate the number of litres that will be in the tank (2)
- 4.4 It takes 5 hours to consume 1000 litres of diesel.
- 4.4.1 How many litres of diesel can be consumed in an hour? (2)
- 4.4.2 How much diesel will be used in 2 days? (4)
- 4.4.3 Mr Khumalo states that diesel tank will be empty in 2 ½ days. Verify through calculations if his statement is true. (5)

[17]

TOTAL: 75



KWAZULU-NATAL PROVINCE
EDUCATION
REPUBLIC OF SOUTH AFRICA

**NATIONAL
SENIOR CERTIFICATE**

GRADE 10

MATHEMATICAL LITERACY

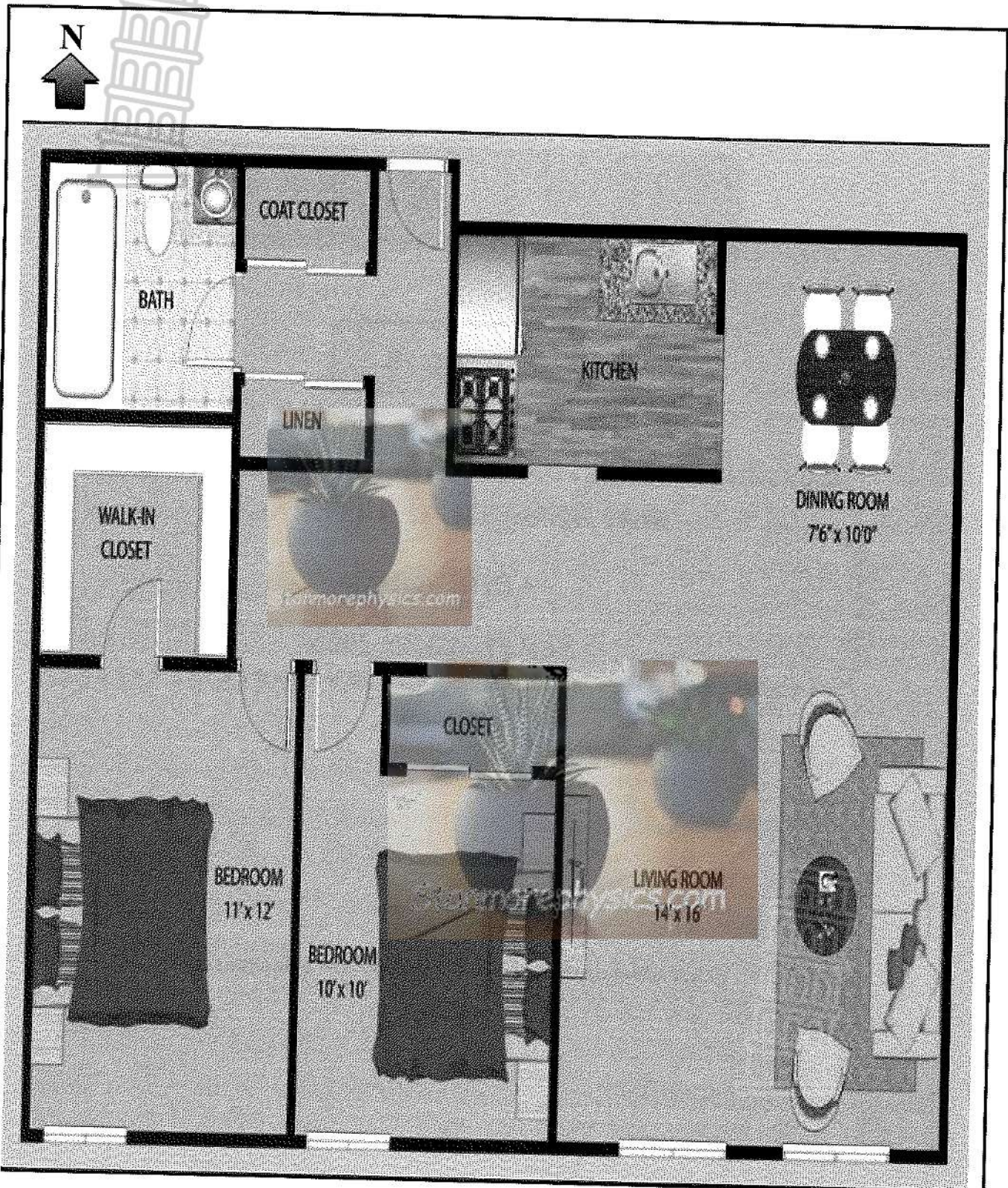
ADDENDUM

SEPTEMBER 2023

This addendum consists of 2 pages with 1 annexure.

QUESTION 3

PLAN OF A HOUSE

[Source: www.bing.com]



KWAZULU-NATAL PROVINCE

EDUCATION
REPUBLIC OF SOUTH AFRICA

**NATIONAL
SENIOR CERTIFICATE**

GRADE 10

MATHEMATICAL LITERACY

COMMON TEST

SEPTEMBER 2023

MARKING GUIDELINE

Stanmorephysics.com

Stanmorephysics.com

MARKS: 75

SYMBOL	EXPLANATION
M	Method
MA	Method with accuracy
CA	Consistent accuracy
A	Accuracy (Answer)
C	Conversion
S	Simplification
RT/RG/RD	Reading from a table/ graph/ diagram
NPR	No penalty for units/rounding
SF	Correct substitution in a formula
O	Opinion/ reason/deduction/example
J	Justification
R	Rounding off/
F	deriving a formula
E	Explanation
U	Units
AO	Answer only full marks

This marking guideline consists of 5 pages.

QUESTION 1 [20 MARKS] ANSWER ONLY FULL MARKS			
QUE	SOLUTION	EXPLANATION	TL
1.1.1	B ✓✓A	2A, Answer (2)	L1 M
1.1.2	A ✓✓A	2A, Answer (2)	L1 M
1.1.3	D ✓✓A	2A, Answer (2)	L1 M
1.2.1	Number of minutes = $2,5 \times 60$ ✓C = 150 minutes ✓A	1C, Converting hours to minutes 1A, Answer (2)	L1 M
1.2.2	Amount = $2,5 \times R2650$ ✓MA = R6 625 ✓A	1MA, Multiplying R2650 by 2,5 2A, Answer (2)	L1 F
1.2.3	Two thousand six hundred and fifty rands ✓✓A	2A, Answer (2)	L1 F
1.3.1	Value Added Tax ✓✓A	2A, Answer (2)	L1 F
1.3.2	25 litres ✓✓RD	2RD, Answer (2)	L1 M
1.3.3	14 days ✓✓A	2A, Answer (2)	L1 M
1.3.4	Savings = $R159 - R119$ ✓SF = R40 ✓A	1SF, Correct substitution 1A, Answer (2)	L1 F
			[20]

Stanmorephysics.com

QUESTION 2 [17 MARKS]			
QUE	SOLUTION	EXPLANATION	TL
2.1	R17,99 ✓✓A	2A, Answer (2)	L1 F
2.2	✓A $P(\text{VAT free}) = \frac{2}{15}$ ✓A	1A, Numerator 1A, Denominator Accept = $\frac{1}{5}$ (2)	L2 P
2.3	Amount per kg = $\frac{7,99}{0,3}$ ✓MA = R26,63 ✓A	1MA, dividing 7,99 by 0,3 1A, answer (2)	L3 F

QUE	SOLUTION	EXPLANATION	TL
2.4	The are no cents, 5 cents and 10 cents ✓✓O OR Accept any other valid reason	1O, Reasoning (2)	L4 F
2.5	Amount of ENT bacon/egg LF = $0,458 \times R49,99$ ✓M = R22,90 ✓RG	1RG, reading correct values 1M, multiplying correct values (2)	L3 F
2.6	Bank transaction fee = $R3,00 + (1,20 \times \frac{200}{100})$ ✓SF = $R3,00 + (2,4)$ ✓S = R5,40 ✓A	1SF, correct substitution 1S, simplification 1A, Answer (3)	L3 F
2.7	Internet banking ✓✓O	2O, Opinion (2)	L2 F
2.8	It is safe ✓✓O OR Convenient	2O, Reasoning (2)	L4 F
Stanmorephysics.com			[17]

QUESTION 3 [21 MARKS]			
QUE	SOLUTION	EXPLANATION	TL
3.1	Kitchen ✓✓A	2A, Answer (2)	L2 MP
3.2	North West OR NW ✓✓A	2A, Answer (2)	L2 MP
3.3	P (not main door) = $\frac{4}{5}$ ✓✓A	2A, Answer (2)	L2 P
3.4	The statement is invalid ✓A There is no window in the kitchen or dining room. Therefore, no sunlight ✓✓O	1A, Answer 2O, opinion (3)	L4 DH
3.5	Entrance ✓A There is only one main entrance in the house. ✓✓O OR Windows ✓A There are no windows east or west side of the house for sunlight ✓✓O OR Accept any other valid reason	1A, Answer 2O, Opinion OR 1A, Answer 2O, Opinion (3)	L4 MP

QUE	SOLUTION	EXPLANATION	TL
3.6.1	$1\text{ cm} \times 10 \checkmark \text{C}$ $= 10\text{ mm} \checkmark \text{A}$	1C, Converting cm to mm 1A, Answer (2)	L1 M
3.6.2	$1\text{ cm} : 1000\text{ mm}$ $1\text{ cm} : \frac{1000}{10} \text{ cm} \checkmark \text{C}$ $1 : 100 \checkmark \text{A}$ OR $1\text{ cm} : 10000\text{ mm}$ $(1 \times 10) \text{ mm} : 1000\text{ mm} \checkmark \text{C}$ $10 : 1000$ $1 : 100 \checkmark \text{A}$	1C, Converting mm to cm 1A, Answer OR 1C, Converting cm to mm 1A, Answer AO (2)	L2 MP
3.6.3	Length of the eastern wall is 155 mm $\checkmark \text{M}$ Actual length = $155 \times 100 \checkmark \text{MCA}$ $= 15500\text{ mm} \checkmark \text{CA}$ Actual length in metres = $\frac{15500}{1000} \checkmark \text{C}$ $= 15,5\text{ m} \checkmark \text{A}$	MCA from 3.6.2 1M, Measuring the eastern wall 1MCA, Multiplying the measured length with a scale. 1CA, Answer 1C, conversion to metres 1A, Answer (5)	L3 MP
			[21]

QUESTION 4 [17 MARKS]			
QUE	SOLUTION	EXPLANATION	TL
4.1	Six thousand three hundred litres $\checkmark \checkmark \text{A}$	2A, Answer (2)	L1 M
4.2	$\text{Dozens of litres} = \frac{6300}{12} \checkmark \text{MA}$ $= 525 \text{ dozens of litres} \checkmark \text{A}$	1MA, Dividing 6300 by 12 1A, Answer (2)	L2 M
4.3	$\text{Amount of diesel} = \frac{80}{100} \times 6300 \checkmark \text{MA}$ $= 5040 \text{ litres} \checkmark \text{A}$	1MA, multiplying 80% of 6300 1A, answer (2)	L2 M
4.4.1	$\text{Number of litres} = \frac{6300}{5} \checkmark \text{MA}$ $= 200 \checkmark \text{A}$	1M, dividing correct values 1A, Answer (2)	L2 M

QUE	SOLUTION	EXPLANATION	TL
4.4.2	<p>2 day = 48 hours ✓C</p> <p>Amount of diesel in 48 hours = (48×200) ✓M</p> <p>= 9600 litres ✓CA ✓U</p>	<p>MCA from 4.4.1</p> <p>1C, Converting 2 day = 48 hours</p> <p>1M, multiplying correct value</p> <p>1CA, Answer</p> <p>1U, Units</p> <p>(4)</p>	<p>L3</p> <p>M</p>
4.4.3	<p>Number of days to finish diesel = $\frac{5040}{200}$ ✓M</p> <p>= 25.2 hours ✓S</p> <p>$\frac{25.2}{24}$ hours ✓M</p> <p>= 1.05 days ✓CA</p> <p>The statement is not true ✓J</p>	<p>1M, dividing correct values</p> <p>1S, Simplification</p> <p>Downloaded from Stanmorephysics.com</p> <p>1M, dividing correct values</p> <p>1CA, Answer</p> <p>1J, Justification</p> <p>(5)</p>	<p>L4</p> <p>F</p>
			[17]
			TOTAL: 75