



LIMPOPO
PROVINCIAL GOVERNMENT
REPUBLIC OF SOUTH AFRICA

DEPARTMENT OF
EDUCATION

VHEMBE WEST DISTRICT

GRADE 10

MATHEMATICAL LITERACY

Paper 2

June 2023

Stanmorephysics.com

MARKS: 50

TIME: 1 hour

This paper consists of 5 pages including the cover page.

INSTRUCTIONS

1. This question paper consists of FOUR questions. Answer ALL the questions.
2. Show ALL calculations.
3. Number the answers correctly according to the numbering system used in this question paper.
4. Start EACH question on a NEW page.
5. Round off all final answers appropriately according to the context unless stated otherwise.
6. An approved calculator (non-programmable and non-graphical) may be used, unless stated otherwise
7. Indicate units of measurement where applicable.
8. Maps and diagrams are not necessarily drawn according to scale, unless stated otherwise.
9. Write neatly and legibly.

QUESTION 1

1.1 Convert the following :

1.1.1 72 eggs to dozen

(2)

1.1.2 3.5 hours to minutes

(2)

1.1.3 1 decade to years

(2)

1.2 The length of the bar scale below is 20 cm.



1.2.1 Determine the length of section E of the bar scale

(2)

1.2.2 Determine the probability to select a white section if you randomly pick a section from the bar scale. Give your answer as a decimal.

(3)

[11]

QUESTION 2

2. Tshepiso Mabala is a grade 10 learner at Musi secondary school. Her parents help out at the school. Mrs Mabala bakes buns for certain meetings at school while Mr Mabala organizes the marks of the athletic tracks. Use the information below to answer the questions that follow.

Ingredients for 36 buns

10g salt

250g white sugar

2×10g packets of instant dry yeast

100 ml oil

2720g cake flour

Approximately 1,8 litre water

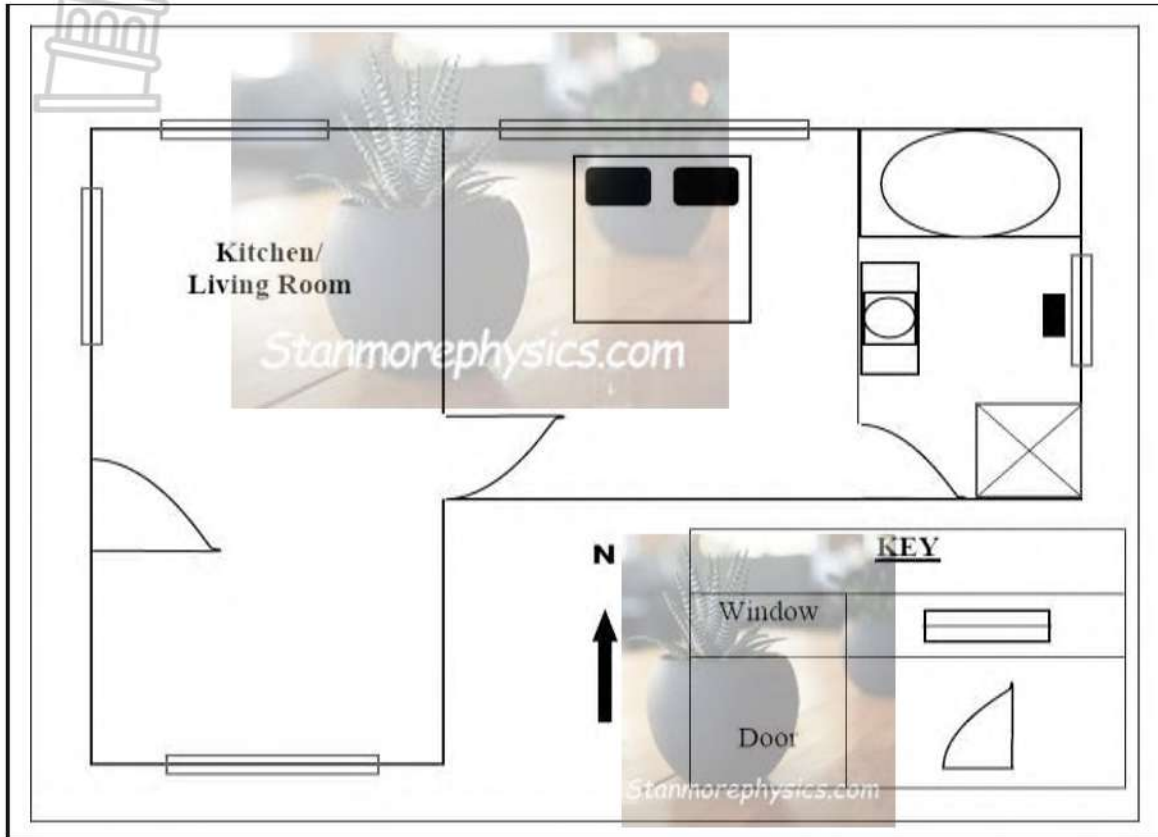
Buns should be baked at a temperature of 200⁰C

- 2.1 One cup of flour is approximately 170g. Determine the number of cups of flour that Mrs Mabala will need for this recipe. (3)
- 2.2 Express the volume of cake flour needed for the recipe in kg. (2)
- 2.3 Write the ratio of dry yeast to salt in its simplest form. (3)
- 2.4 It takes 45 minutes for the buns to be ready to be served. Mrs Mabala started to bake at 12:35. At what time will the buns be ready? (2)
- 2.5 Mrs Mabala has to make 5 batches of her bun recipe for a principal's meeting.
- 2.5.1 Determine the number of buns that she has to make. (2)
- 2.5.2 Determine the approximate volume of the water she will need for these 5 batches. Give your answer in milliliters. (3)

[15]

QUESTION 3



3. Given below is a floor plan of a one-bedroom flat. Study the plan and answer the questions that follow. The floor plan is not drawn to scale.



- 3.1 Determine the number of windows this flat have. (2)
 - 3.2 Determine the number of doors this flat have. (2)
 - 3.3 You enter the bedroom from the Livingroom/kitchen. On which side is the bed? (2)
 - 3.4 Identify the room next to the bedroom, the room with one window only. (2)
 - 3.5 The living room/kitchen is going to be tiled. The scale used for this plan is 1 : 50
 - 3.5.1 Explain the meaning of the scale 1 : 50 (2)
 - 3.5.2 The width on the plan measures 4,8 cm and the length measures 9,3 cm. Use the scale 1:50 to calculate the real area of the living room/kitchen. Give your answer in square metres (m²) (4)
- You may use the formula: Area = length × breadth**
- 3.6 Give one advantage of using a bar scale on a map. (2)

[16]

QUESTION 4

A. Picture of a copper frying pan	B. Diameter of the cooking surface of the copper frying pan
 <p>Weight of the frying pan is 0,8 kg</p>	 <p>← 21.6 cm (Diameter) →</p>

<https://www.dimensions.com/element/frying-pan-8-inch-made-in>

- 4.1 Determine if a pancake with area of 380 cm^2 will fit in the frying pan. (4)
 You may use the formula $\text{Area} = \pi r^2$
- 4.2 Calculate the cost of manufacturing 20 frying pans if the copper that is used is priced at R180,00 per kg. (4)

[8]

TOTAL 50